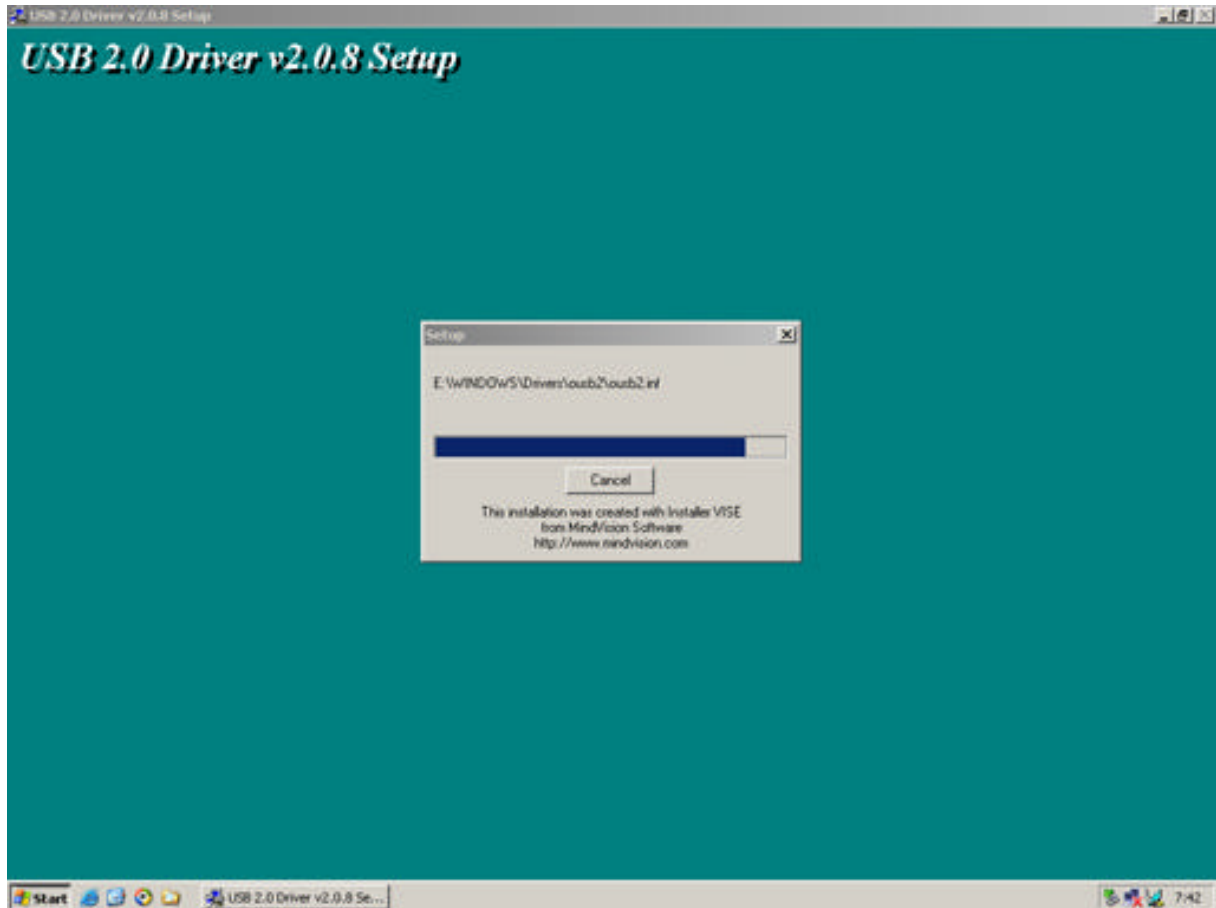


USB 2.0 Driver installation version 2.08

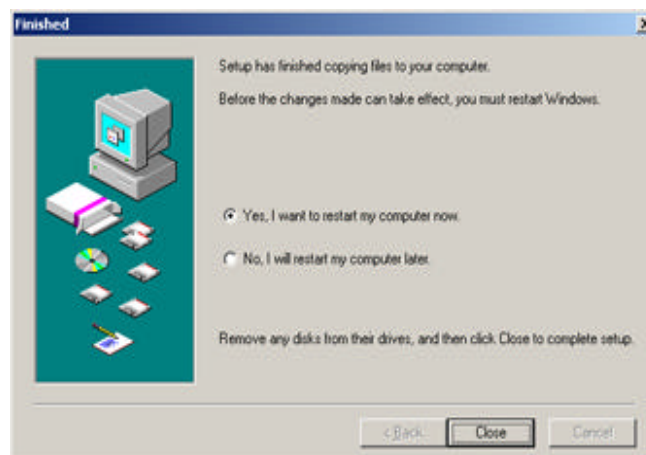
Before installing the new drivers you should remove the old drivers:

- Go to **Start** → **Run** ... and type C:\windows\drivers\ and click **OK**.
- A folder will open with a folder named **ousb2** in it, delete this folder.
- Close the folder and you are ready to install.

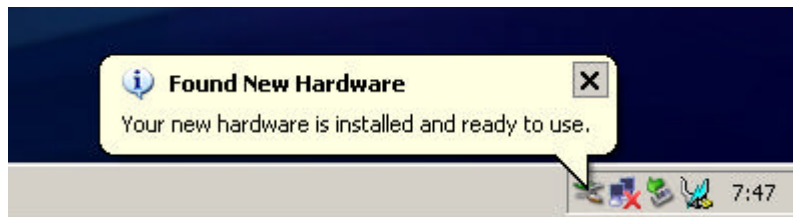
1. Run **U2_v208.exe**, you will see the screen below.



2. After the setup has finished copying the files to your computer click **Close** to restart.

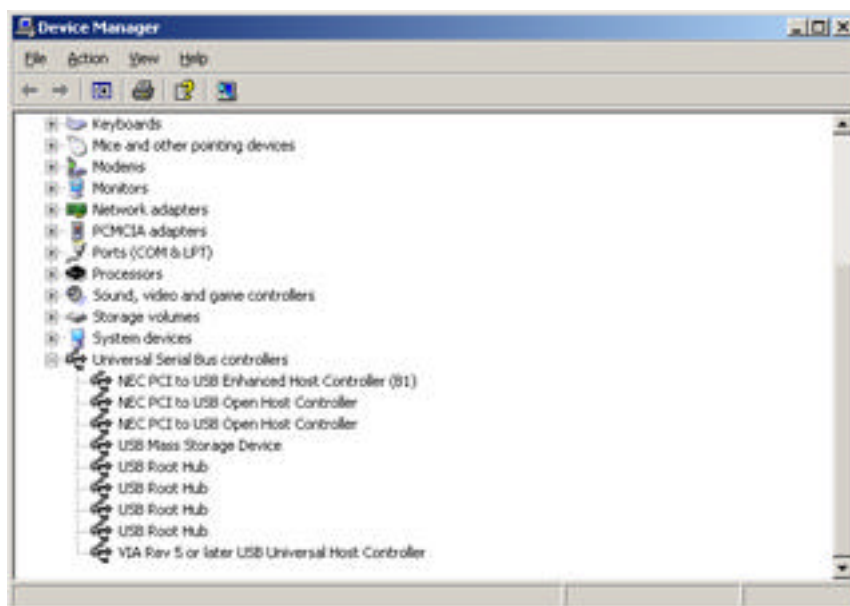


3. After Windows restarts it will recognize the hardware and install the drivers for it.

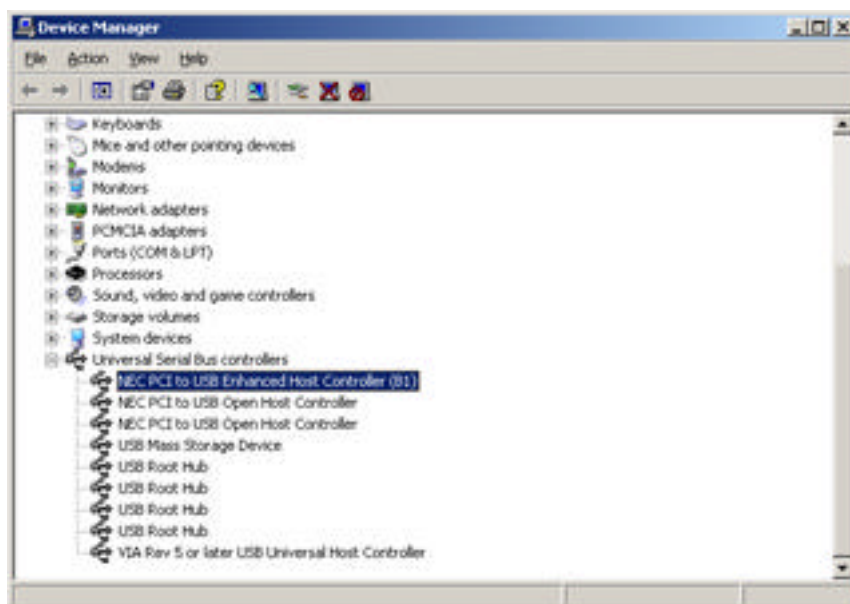


4. Wait until windows has finished starting up and go to the Device Manager.

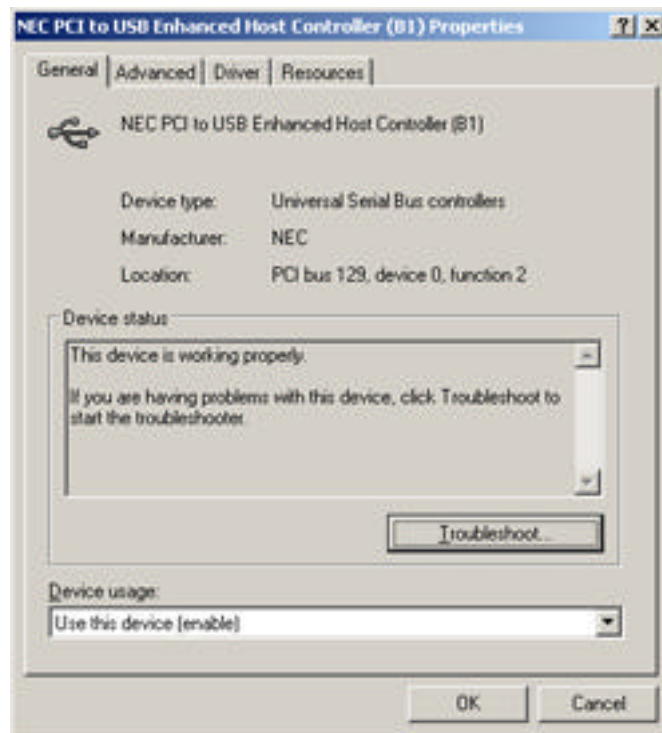
5. **Start → Control Panel → System → Hardware → Device Manager** and click on the + on the left of **Universal Serial Bus controllers**.



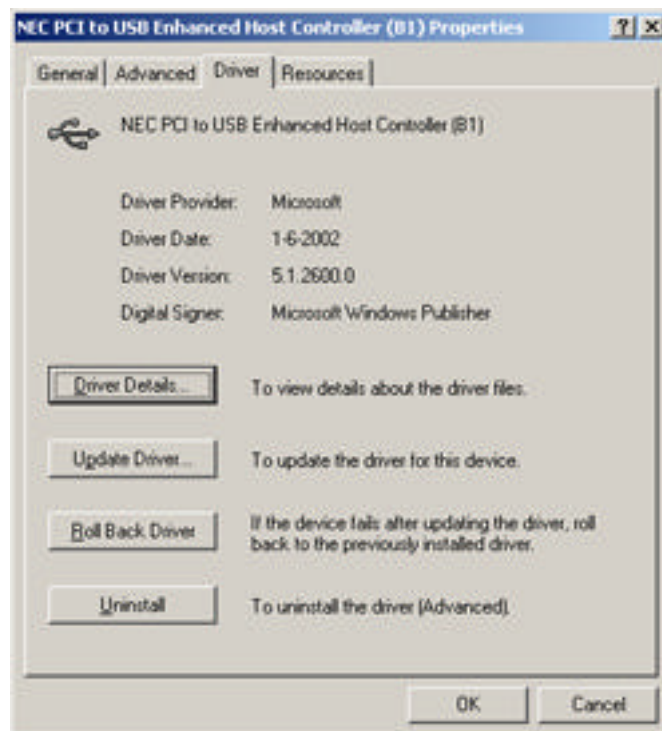
6. Double click the **NEC PCI to USB Enhanced Host Controller (B1)**.



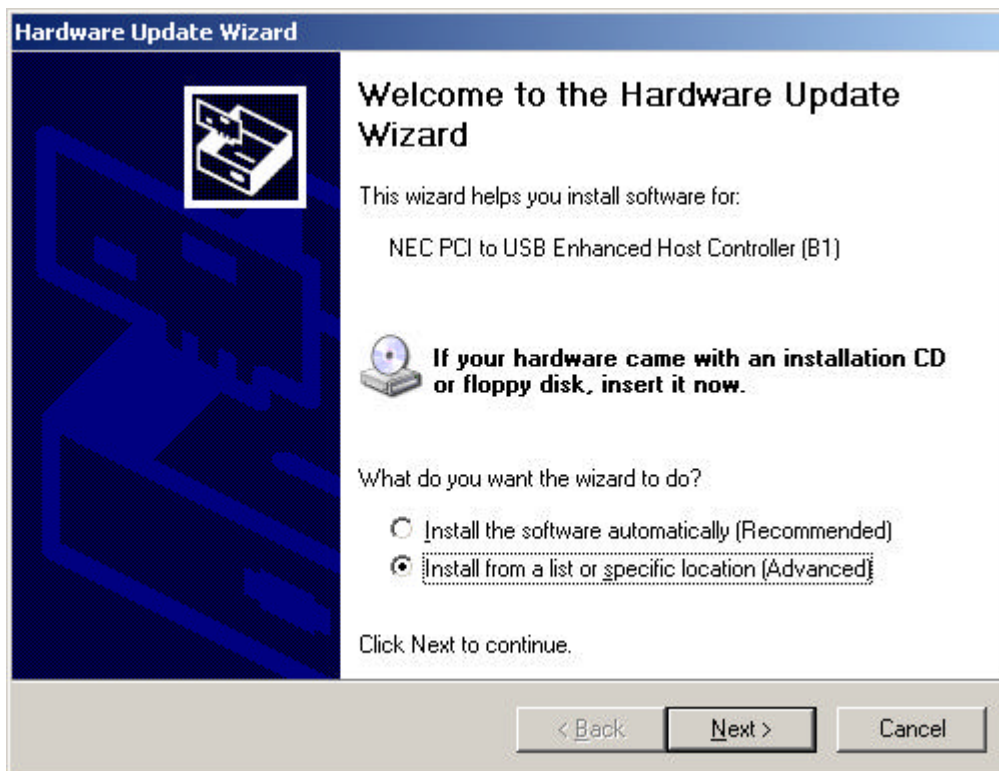
7. Click on the **Driver** tab.



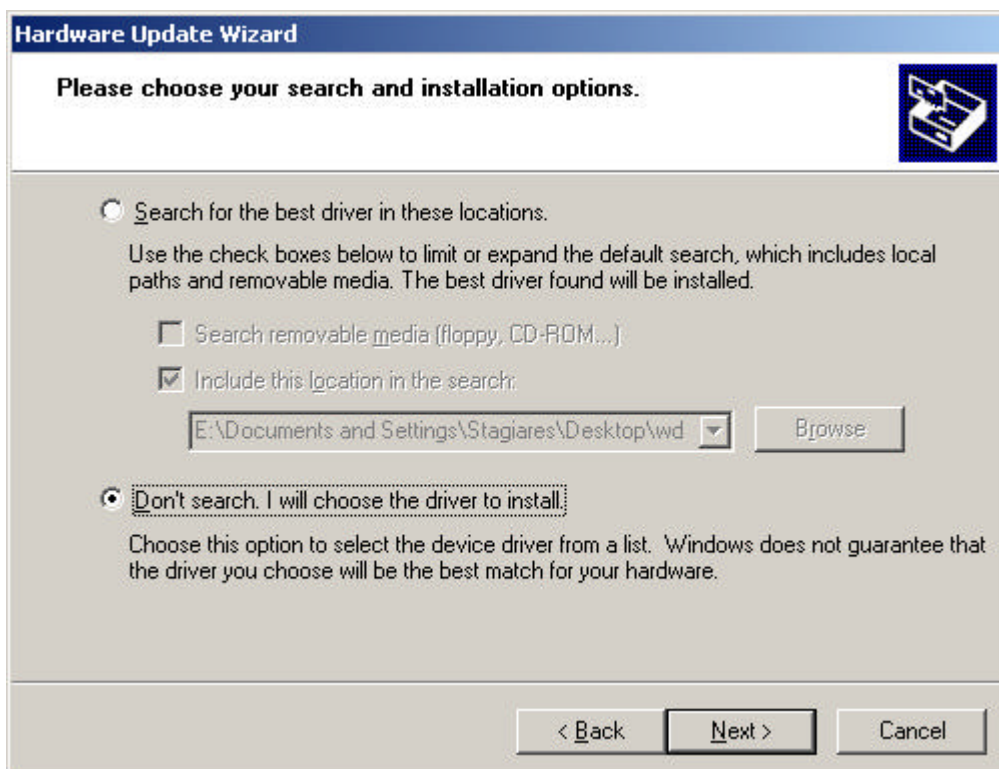
8. Click **Update Driver...**



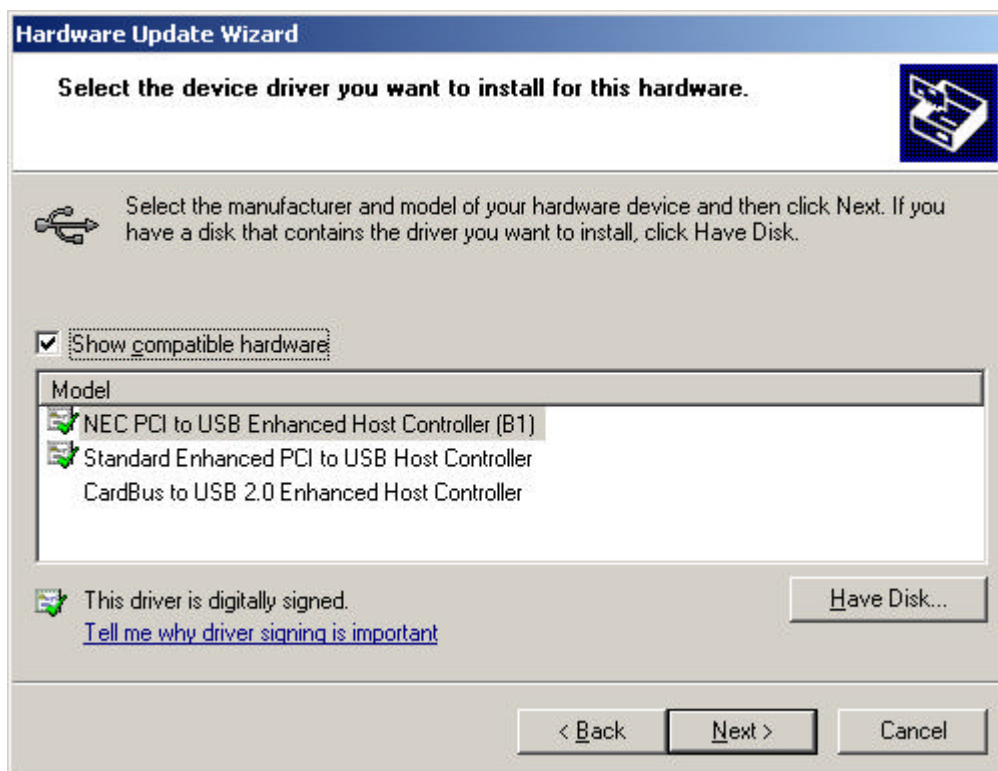
9. Select **Install from a list or specific location** and click **Next**.



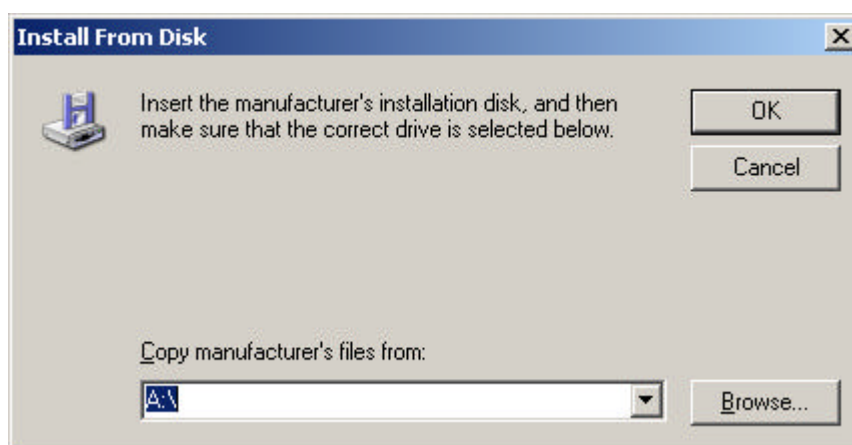
10. Select **Don't search. I will choose the driver to install.** and click **Next**.



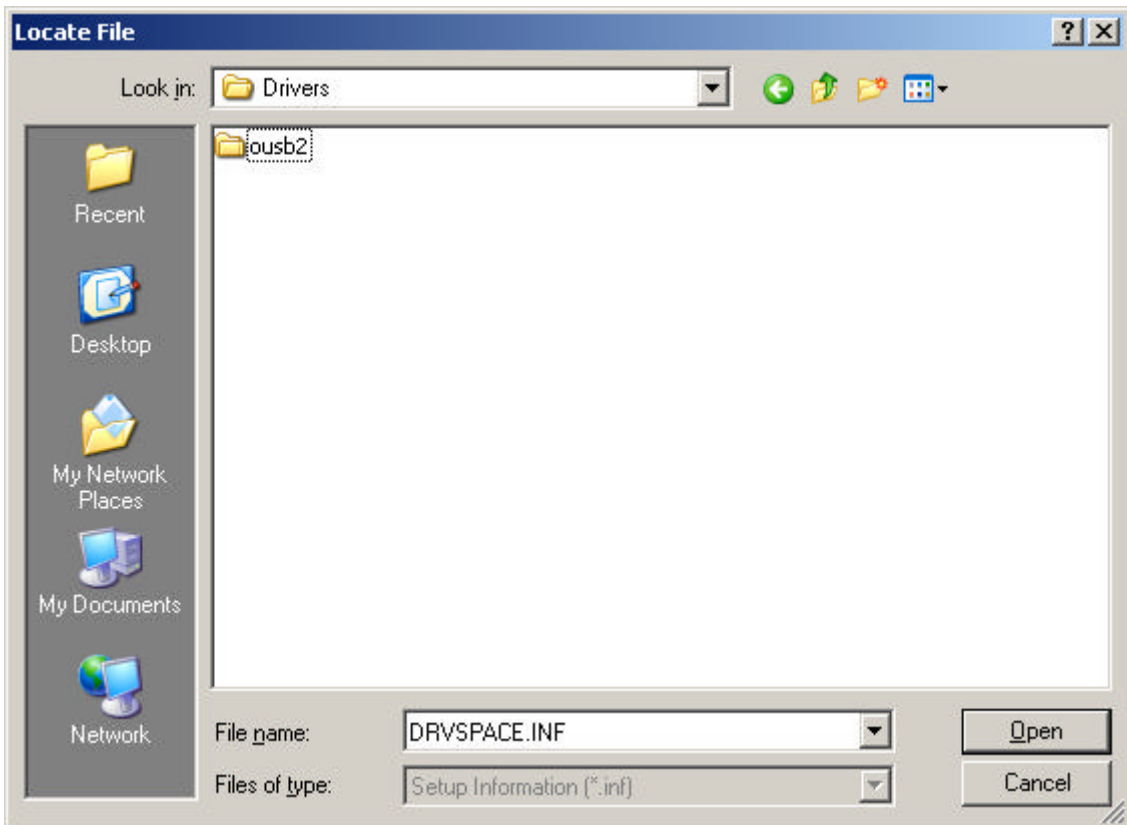
11. Click on **Have Disk...**



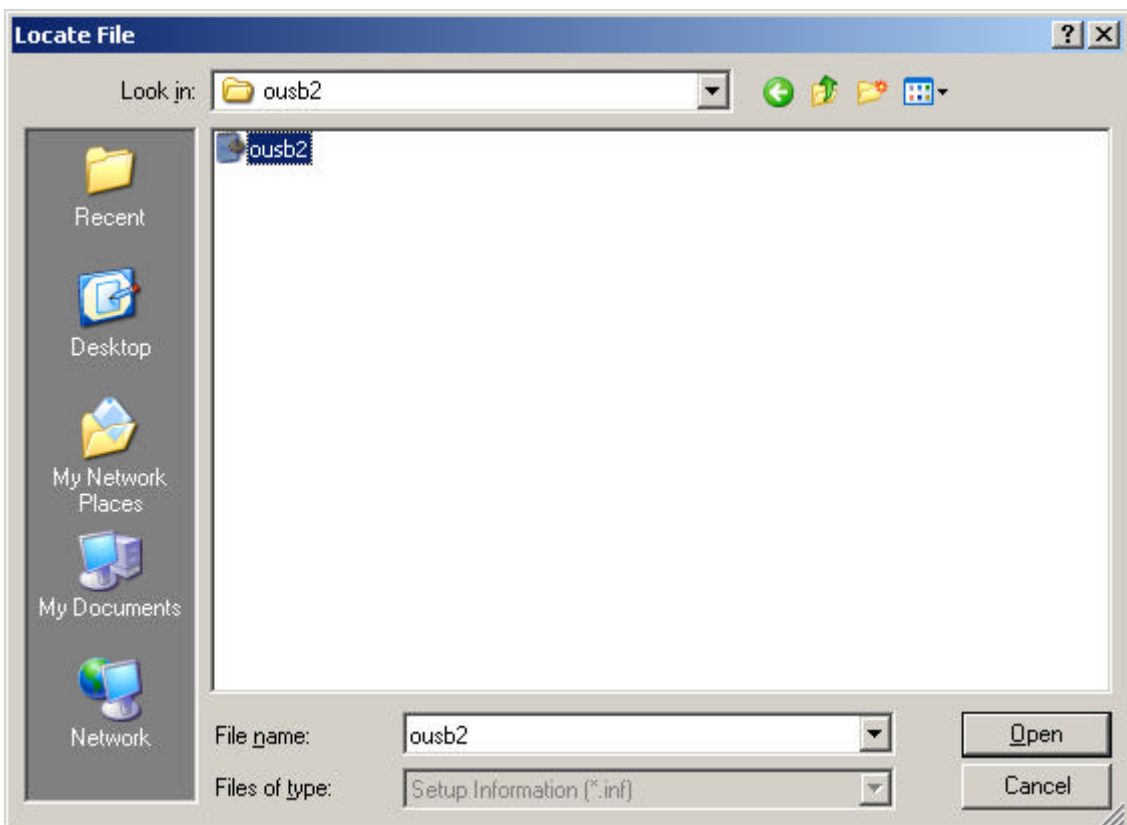
12. Click on **Browse...**



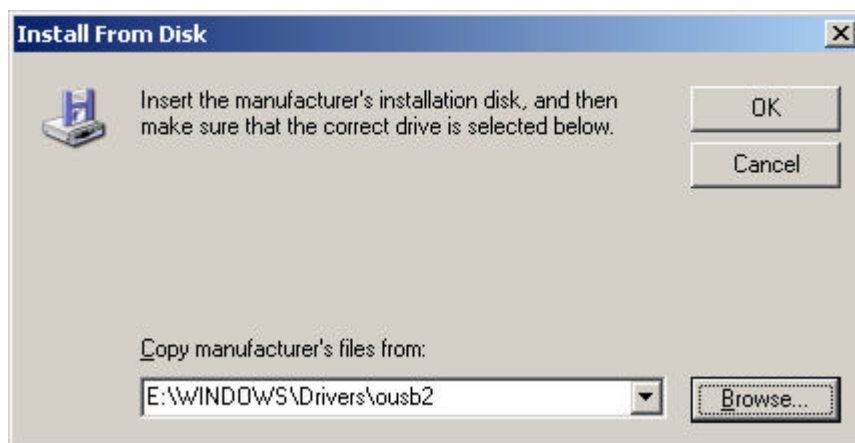
13. Go to **My Computer** → **C:** → **Windows** → **Drivers** → **ousb2**.



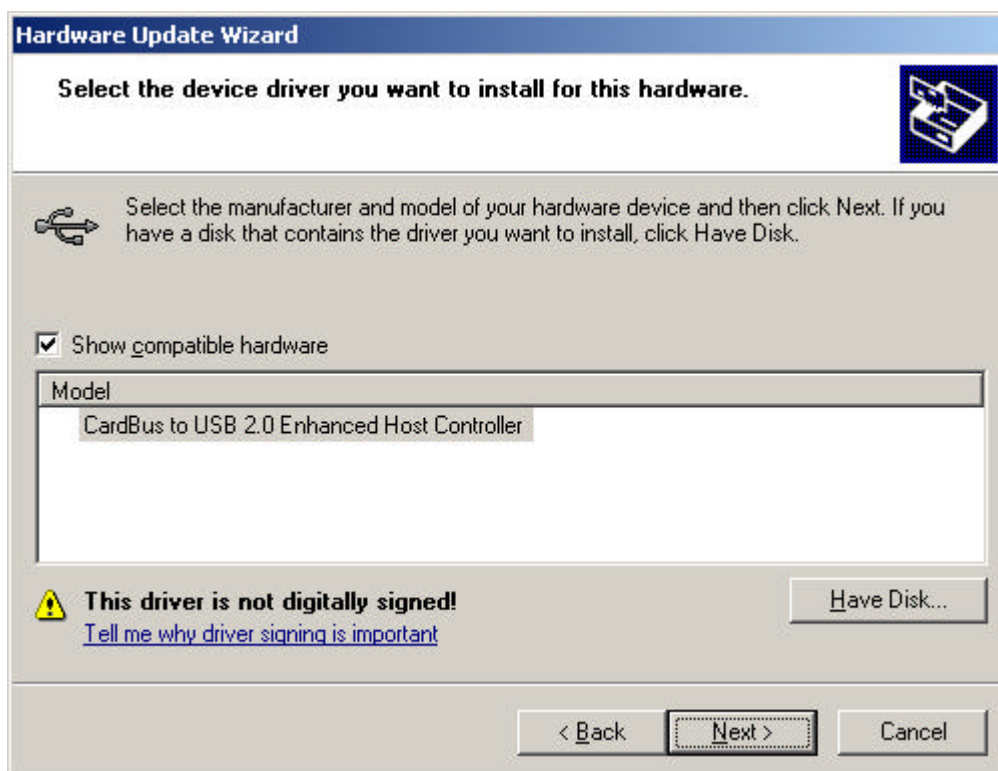
16. Select **ousb2** and click on **Open**.



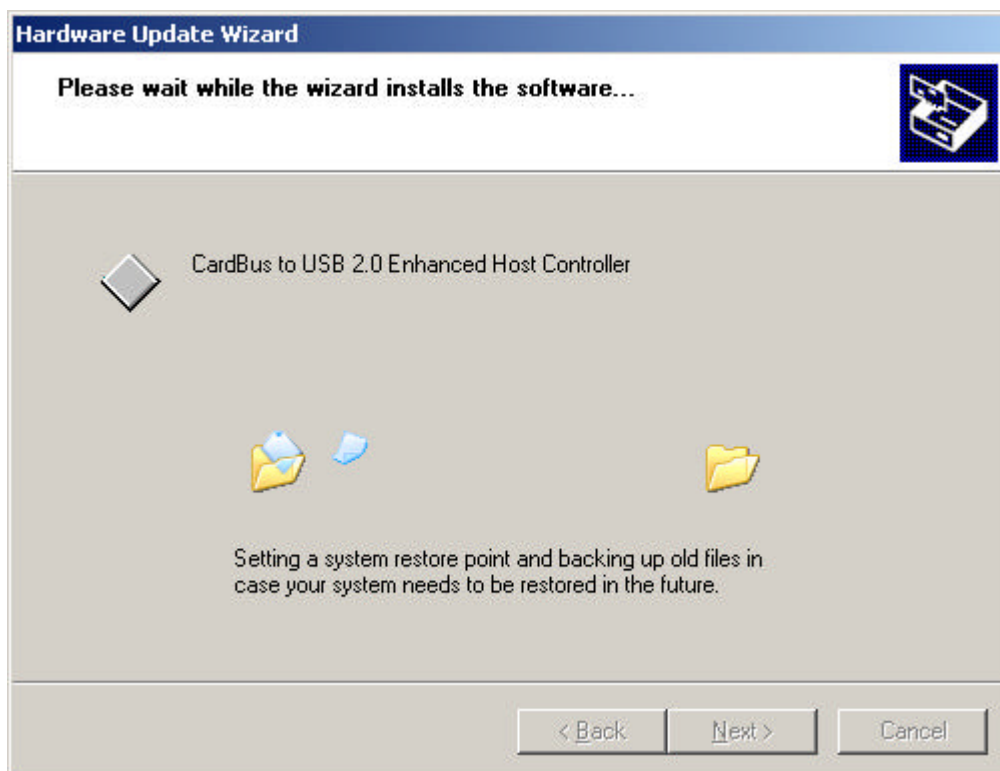
17. Click on **Ok**.



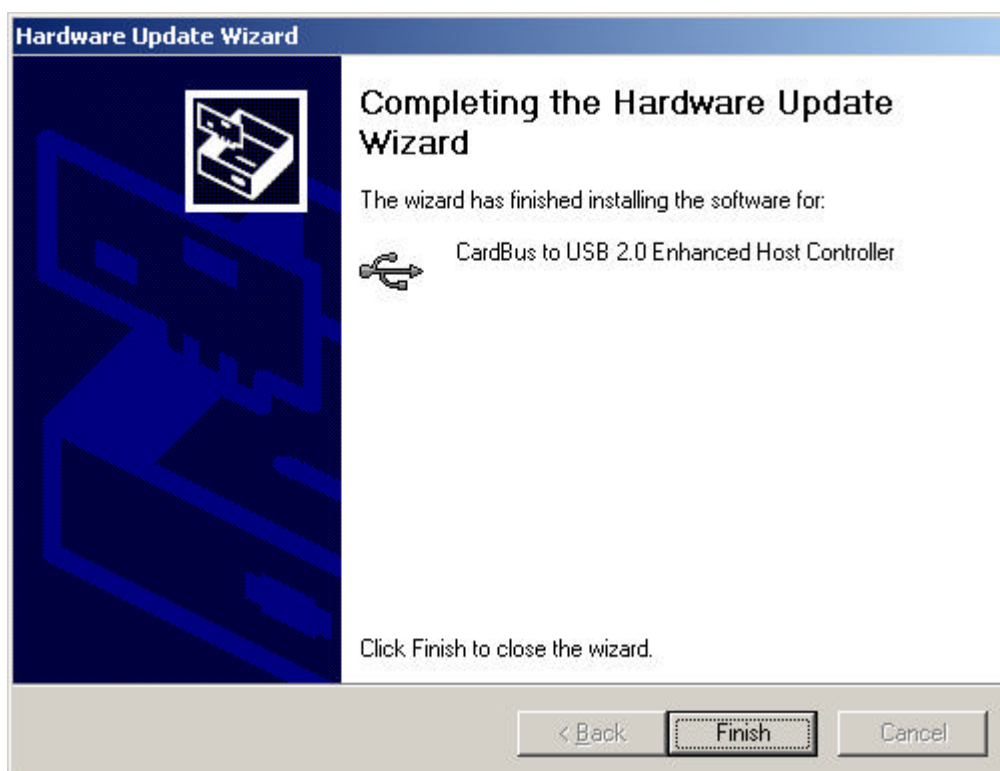
18. Click on **Next >**



20. Now Windows will start installing the hardware.



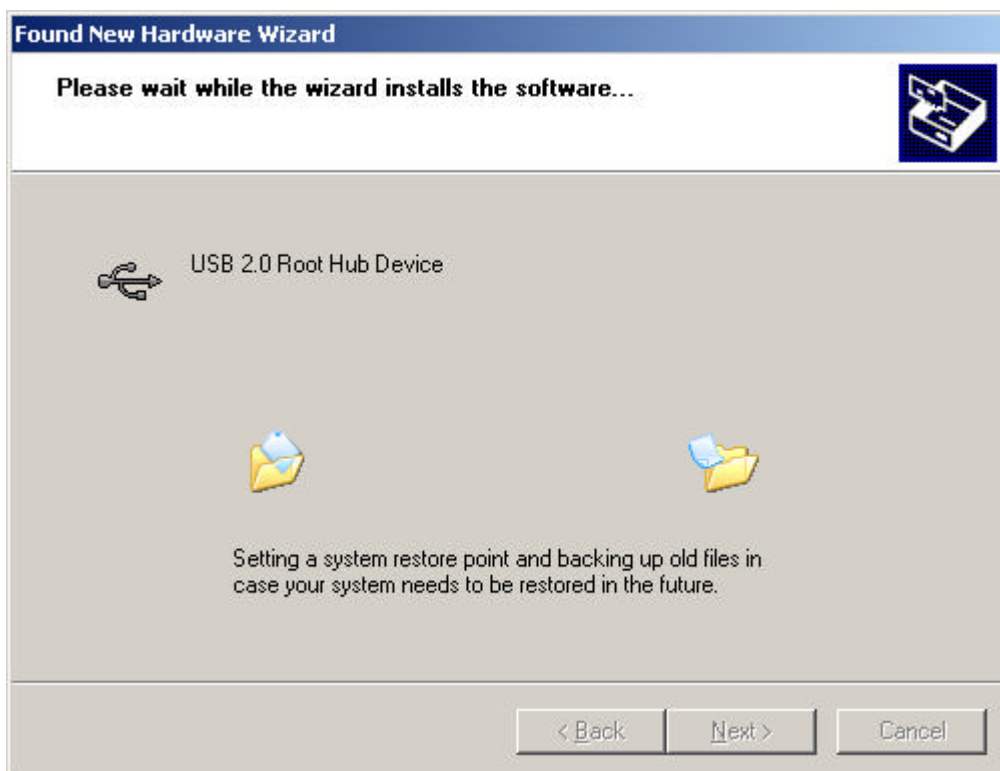
21. When Windows has finished installing the hardware click **Finish**.



22. Windows will now recognize new hardware, Click **Next >**



23. Windows will now install the software automatically.



24. When Windows has finished installing the hardware click **Finish**.



25. When you go back to the **Device Manager** you will see that now there is a new category containing only the devices for the CSP480C3.

